

Heavy dished end grinding head H-1450



Applications

The H-1450 is used for the following grinding work:
Grinding and polishing the surfaces of vessel ends of any shape and grinding the surfaces of cones inside and outside.
Particularly suitable for **medium** and **large sized heavy ends** and cones.

Technology

Regular removal of material thanks to the free play of the grinding head.
It compensates automatically the un-roundness of the ends and cones.
Precise setting of the grinding pressure through the pneumatic control system permits optimal utilisation of the grinding belts.

The horizontal and vertical advance of the grinding head support is controlled by automatic scanning of the end shape at the grinding head.

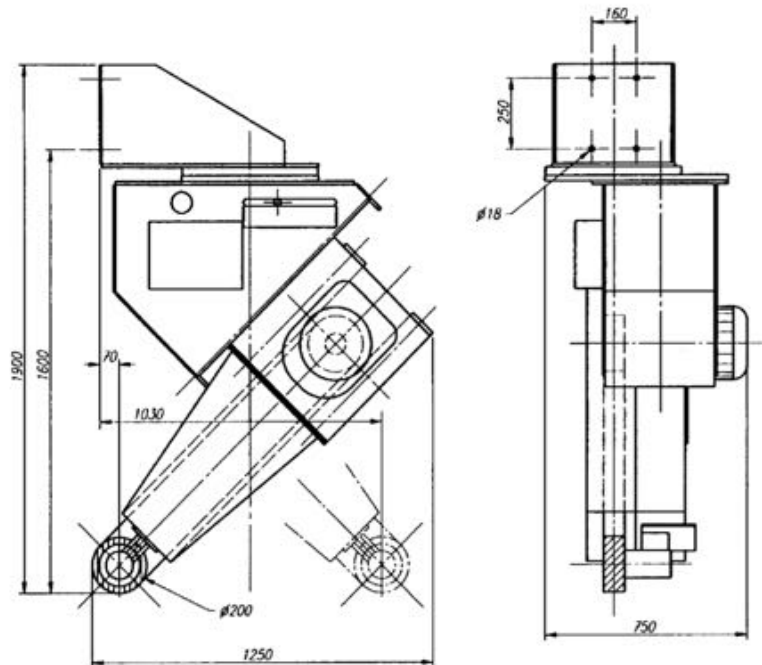
Simple and fast belt change by means of a few manipulations.

The H-1450 can be equipped with grinding belts, Scotch-Brite belts, flap wheel or polishing rings.

Performance

Very high rates of material removal and very fine surfaces of constant high quality.

Heavy dished end grinding head H-1450



Technical Data

Free play of the grinding head **± 100**
 Grinding pressure adjustable from **0 to 800 N**
 Smallest grindable knuckle radius with contact wheel, \varnothing 200 mm **110 mm**

Power **11 kW**

Measurements

Height **1900 mm**
 Width **750 mm**
 Length **1250 mm**

Dimensions

Contact wheel **\varnothing 200 mm x 80 mm**
 Grinding belts **80 x 2600 mm**

Weights

Total weight of grinding head **approx. 440 kg**

**End depths of up to 1450 mm can be ground with the standard version.
 Other versions available on request.**